



BRABUS SHADOW 900

ALSO FEATURING BLACK OPS LIMITED EDITION '1 OF 37'





REDEFINING LUXURY DAY BOATING

BRABUS Marine is the result of the cutting-edge alliance between two of the most renowned companies in their respective genres. Bringing together the award-winning Finnish boat builder Axopar Boats and the long-established, high-performance luxury automotive car producer BRABUS, to redefine luxury day boating through a range of ultra-exclusive and exciting powerboats. BRABUS Marine focuses upon luxury products for global markets with strong ambitions to become one of the world's most iconic boat brands.





BRABUS SHADOW THE INDIVIDUALIST'S RANGE OF YACHTS WITH AN AUTOMOTIVE BLOODLINE

Outstanding performance, power and superior acceleration, together with easy handling and best in class drivability, forms the core of a BRABUS Shadow product. On top of this, every BRABUS Shadow has an instantly recognizable charisma and strikingly gorgeous looks.

All boats within the range are painstakingly hand crafted to the highest possible standards by skilled technicians utilizing the finest materials, newest technologies and bespoke engineering. Revel in the excitement of getting back behind the wheel, feeling the power and enjoying the unrivalled thrill of these well-mannered, super-fast and easy-handling boats. The BRABUS Shadow range is designed for a select group of boat owners who want

to enjoy the very best exclusive boating experience for absolute individualism, ultimate luxury and seriously impressive power and performance.

Adopting the identical philosophy of BRABUS supercars, whereby a premium car, as the Mercedes-AMG range is utilised as a platform from which BRABUS build their supercars, we transform and redefine a selective range of Axopar boats into BRABUS Shadow superboats.

BRABUS SHADOW 900
LIMITED EDITION RANGE



Extravagant, hedonistic and brilliant, welcome the new flagship models of the BRABUS Shadow range. Packed with technical innovation and blistering performance at heart, we proudly present the new BRABUS Shadow 900 Spyder, in full-open version, for pure, unadulterated driving pleasure, the new BRABUS Shadow 900 Sun-Top, the comfortable passage maker and the BRABUS Shadow 900 XC Cross Cabin, the ultra-luxurious SUV of the seas.



BRABUS SHADOW 900 XC CROSS CABIN **BLACK OPS**

Following 40 years of history & heritage laid down by BRABUS, we always celebrate the launch of a new BRABUS Shadow model with a Limited-Edition 'Black-Ops series'. All models are exclusively finished in the renowned signature paint scheme Gunmetal Grey, combined with vibrant BRABUS Red exterior seating; the most striking combination for a Black Ops Limited Edition.

The BRABUS Shadow 900 Black-Ops '1 of 37' is hand-built with focus on precision and finish. Just the fairing, painting and polishing of the Limited-Edition version to the quality required is a highly labour-intensive, skilful and painstaking process, with no automation process, that can take up to six weeks alone to reach the required finish.

Advanced design engineering and the use of high-tech, selective materials incur a superior level and lengthier period of manufacturing. As a result, every owner of a new Shadow will experience a far higher, superior level of individual touch and performance, uncommon for a boat in this size-range.

BRABUS SHADOW 900



BRABUS SHADOW 900 SUN-TOP **BLACK OPS**



BRABUS SHADOW 900 SPYDER **BLACK OPS**



CLASS LEADING DRIVING EXPERIENCE

The Shadow 900 range benefits from Mercury Marine's latest dual 450R Verado XL 4.6 litre V8 FourStroke engines with Joystick Piloting for easy docking and manoeuvring. Flexible cruising speed-range in comfortable 30-40 knots and up to blistering 50 knots cruising speeds for those seeking thrills as well as fast and safe passage.



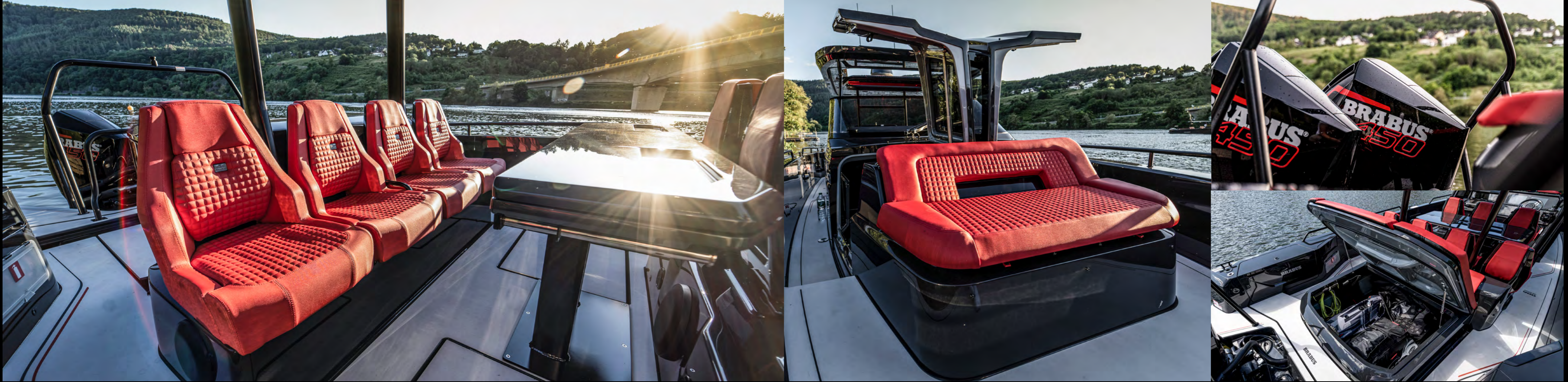
THE DRIVER IN FOCUS

Introducing an all new, clean and ergonomic helm that resembles a supercar more than anything else. Everything on the dashboard is close to hand, touchscreen technology with selected backlit switches and the newly developed multifunction steering wheel with finger-tip controls, make this one of the most modern looking consoles.



A NEW LUXURIOUS AND COMFORTABLE LOUNGE

Swathed in 'sport-pattern', cool grey and black BRABUS Fine Leather® and Dinamica with contrasting red accents and stitching, the front cabin with a 'queen size' sleeping accommodation has a sense of space and luxury more associated with a supremely comfortable lounge. Extend the lounge experience with an optional integrated infotainment unit, comprising a 42-inch flat screen 4K TV and Apple TV connectivity to mention a few of the options available.



ELEVATING THE ONBOARD EXPERIENCE

Better utilization of space includes new multi-storage solutions for adventure gear, a larger foredeck and more versatile social areas, with improved freedom of movement all around the boat. Below deck there's a significant enlarged front lounge, with Gullwing doors and also available with an optional enclosed toilet compartment.

BRABUS SHADOW 900

RANGE



The BRABUS Shadow 900 range will allow your creativity to flow with a choice of three chic and contemporary gelcoat colors, several upholstery options, and many optional upgrades to choose from. Discerning owners have now the possibility to create a unique Open, Sun-Top or Cabin boat with awe inspiring performance and drop-dead gorgeous BRABUS looks that will turn heads wherever it appears.



BRABUS SHADOW 900 XC CROSS CABIN

Utility and luxury come together; this is the ultimate crossover, whether you're seeking out thrills or convenience, the BRABUS Shadow 900 XC delivers performance at its very heart. This model combines the functionality, ease of movement, social outdoor spaces and versatility of outboard walkaround centre-consoles combined with a spacious, fully enclosed weather proofed comfortable cabin.

Transforming the traditional perception of what a purposeful cabin cruiser should look like, the unmistakable look of the BRABUS Shadow 900 XC has created a new yet instantly recognisable face within this popular boating genre.



BRABUS SHADOW 900 SUN-TOP



BRABUS SHADOW 900 SPYDER

The open-air thrill-seekers, built with obsessive attention to details, the Shadow 900's offers adrenaline-fueled excitement, superior performance, acceleration and torque, providing an ultimate luxurious driving experience.



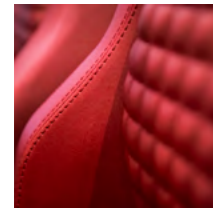
STREAMLINED APPEARANCE WITH BOLD AND DISTINCTIVE LOOKS

With a bold, confident and authoritative stance, this amazing and dynamic 37ft footer is the perfect partner for you to arrive in style in whatever part of the world you are. The shallow draft and outboards enable access to all kinds of places that larger yachts cannot reach, enabling owners to discover hidden bays and idyllic remote anchorages.

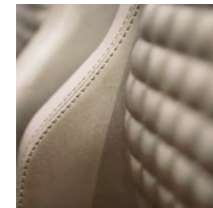
SHADOW 900 CUSTOMIZING OPTIONS

Take pleasure in customizing your boat from a selection of high quality gelcoat colours for your Shadow 900, and let your boat truly express your personality. Choose from our modern and contemporary colours; Platinum Grey, White Grey or Glacier Blue and finish your customization by selecting one of the available vibrant fabric colours; BRABUS Red, BRABUS Cappuccino, BRABUS Sunrise or BRABUS Sapphire.

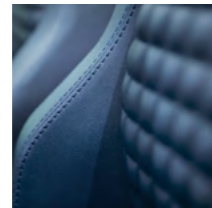
UPHOLSTERY



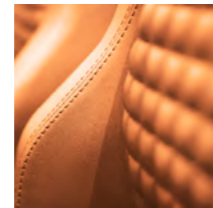
BRABUS RED



BRABUS CAPPUCCINO



BRABUS SAPPHIRE

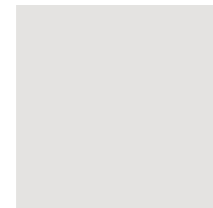


BRABUS SUNRISE

HULL COLOURS



PLATINUM GREY



WHITE GREY



GLACIER BLUE



"FUSION" CAMO WRAP*

* "Fusion" camouflage wrap can be opted for all hull colours

STANDARD OPEN AFT
PLATINUM GREY



AFT BENCH
WHITE GREY
SAPPHIRE



WET BAR
GLACIER BLUE



AFT CABIN
PLATINUM GREY
SUNRISE



MULTISTORAGE COMPARTMENT
CAMOUFLAGE WRAPPED
SAPPHIRE



BRABUS SHADOW 900 PLAN VIEW



SHADOW 900 SPYDER
STANDARD OPEN AFT



SHADOW 900 SPYDER
MULTI STORAGE



SHADOW 900 SUN-TOP
WET BAR



SHADOW 900 XC CROSS CABIN
AFT CABIN & ENCLOSED TOILET



SHADOW 900 XC CROSS CABIN
AFT CABIN

STANDARD EQUIPMENT HIGHLIGHTS BRABUS SHADOW 900 RANGE

'1 OF 37' LIMITED EDITION

- Exclusive Limited Edition signature Gun Metal Grey paint job, with high labour-intensive fairing, painting and polishing process
- Mercury Racing Carbon Fibre Accent Panel Kit on both engines
- Antifouling in dark grey

GENERAL

- Gull wing doors
- Integrated electric flush toilet under foldable L-sofa with electric flush and 80l septic holding tank
- Fresh water system 80l incl. cabinet w. sink in forecabin
- Shower on aft deck, port side
- Table for front deck or sunbed with storage
- Sun-shades for cockpit and fore deck area, w. supports (Spyder)
- Sun-shades for aft and fore deck, w. carbon fibre supports (ST)
- Fully enclosed canopy with separate sprayhood in red (ST/XC)
- Window covers (XC)
- Complete set of harbour covers in red
- Mooring package: incl. 6 x fenders, 6 x fender ropes, 4 x mooring ropes 16mm/10m * 12,5kg anchor + 30m anchor rope
- Fixed aluminum fuel tank 730l w. overflow prevention
- Heavy-duty rub rail incl. around swim platforms
- Fully enclosed cabin w. lockable sliding doors (XC)
- Aluminium sun-top roof support bars in black semi matt powder coat finish (ST)
- Water ski pole in matt black paint
- Foldable light mast in matt black paint w. anchor light (ST/XC)
- Heavy-duty pantograph windscreen wiper w. washer
- Integrated boarding steps on both sides of helm

TECHNICAL EQUIPMENT

- Glass Bridge / InformationDisplay with two 12" screens
- Intelligent Steering Module with integrated trim tab, bow thruster and audio controls
- Customized "Shadow 900" User Interface
- Dual installation Mercury Racing 450R Verado XL engines
- Mercury Joystick Piloting helm control system w. skyhook digital anchor and autopilot
- Mercury Active Trim, automatic GPS based engine trim system
- Mercury TDS theft deterrent system, immobilizer
- Mercury Vessel View Mobile, smart craft IOS / Android
- Fusion Marine entertainment system Apollo MS770
- Fusion audio set-up: 6 x 6" speakers, 2 x 4" speakers, 1 x 10" subwoofer and 1 x 5ch amplifier
- VHF unit w. handheld control unit (ST/XC)
- DVB-A antenna and VHF antenna, in black (ST/XC)
- Bow thruster Side-Power SE60, controlled from ISM unit
- Fixed bow anchor windlass w. remote control
- Shore-power 230v or 120v, incl. isolator, 60ah battery charger
- Electric opening/closing of sliding sun-roof awning (ST/XC)
- Remote controlled search light in black (ST/XC)
- 2 x drawer type 30l capacity refrigerators in cockpit (S/ST)
- Refrigerator in main cabin, 45l (XC)
- Underwater/transom lights in bi-color, white and blue
- LED deck- and deck ambient lights in blue colour
- Forecabin LED lights in white colour
- Splash proof USB outlet in console wall
- 2 x AGM starter batteries, 3 x AGM service battery, 1 x AGM bow thruster/windlass battery

DETAILING

- BRABUS® Shadow 900 hull badges
- BRABUS® "Sign of Excellence" insignia on dashboard hatch
- "900" power badges on helm console
- BRABUS® power graphics kit on engine cowlings
- BRABUS® Carbon Fibre dashboard w. Clean – Helm layout
- BRABUS® Carbon Fibre fender storage panels
- BRABUS® Composite decking in platinum/black w. red accents
- BRABUS® Sport detailing in red and BRABUS® badges on helm, cockpit seats and deck upholstery
- BRABUS Fine Leather® in cool grey/black colour schemew. red accents for cabin seats (XC)
- Illuminated BRABUS® logotype on glass control switch push-button panel
- Embossed double B® logotype on leather steering wheel
- BRABUS® brushed aluminium helm foot rest with rubber anti-slip and BRABUS® logotype
- Illuminated BRABUS® logotype on side windows in grey tint
- Illuminated double B® designation on Sun-top roof (ST)
- Front lounge in exclusive BRABUS® "Fine Leather" in Cool Grey / Black color scheme w. red accents
- L-sofa in BRABUS® sport pattern stitching in Black and Cool Grey leather, with red contrast stitching and accents
- Pocket sprung queen size bed mattress in grey/black square pattern w. red accent
- Small cabinet in black leather, including ceramic washbasin in black, matt black faucet and polished black Corian top
- Ambient LED lighting package, incl. reading and floor lights
- Illuminated BRABUS® door sill
- BRABUS® leather carpet in black with red BRABUS® logotype

SHADOW 900 SPECIFICATIONS

SPYDER

Overall Length (incl. Engine)	11.73 m / 38ft 5in
Beam	3.35 m / 9ft 8in
Draft to props	0,85 m / 2ft 9in
Weight (excl. Engine)	4100 kg / 9039 lbs
Fuel Capacity	730 litres / 192 gal
Construction	GRP
Classification	B:10 – C:12
Max. speed range	+60 knots
Outboard engines	2x 450 hp
Hull design	Twin stepped 20 degree V "Sharp entry hull"
Accommodation /Berth*	2 persons [+ 2*]

* BRABUS Aft Cabin option

SUN-TOP

Overall Length (incl. Engine)	11.73 m / 38ft 5in
Beam	3.35 m / 9ft 8in
Draft to props	0,85 m / 2ft 9in
Weight (excl. Engine)	4300 kg / 9480 lbs
Fuel Capacity	730 litres / 192 gal
Construction	GRP
Classification	B:10 – C:12
Max. speed range	+60 knots
Outboard engines	2x 450 hp
Hull design	Twin stepped 20 degree V "Sharp entry hull"
Accommodation /Berth*	2 persons [+ 2*]

* BRABUS Aft Cabin option

XC CROSS CABIN

Overall Length (incl. Engine)	11.73 m / 38ft 5in
Beam	3.35 m / 9ft 8in
Draft to props	0,85 m / 2ft 9in
Weight (excl. Engine)	4500 kg / 9920 lbs
Fuel Capacity	730 litres / 192 gal
Construction	GRP
Classification	B:10 – C:12
Max. speed range	+55 knots
Outboard engines	2x 450 hp
Hull design	Twin stepped 20 degree V "Sharp entry hull"
Accommodation /Berth*	2 persons [+ 2*]

* BRABUS Aft Cabin option

SHADOW 900 PRICE LIST

'1 OF 37' LIMITED EDITION

BRABUS SHADOW 900 SPYDER BLACK OPS	408 500 €
BRABUS SHADOW 900 SUN-TOP BLACK OPS	413 500 €
BRABUS SHADOW 900 XC CROSS CABIN BLACK OPS	438 500 €

BRABUS SHADOW 900 SPYDER	349 500 €
BRABUS SHADOW 900 SUN-TOP	354 500 €
BRABUS SHADOW 900 XC CROSS CABIN	379 500 €

Wet Bar package	6 940 €
Multi Storage compartment	4 450 €
BRABUS Aft Cabin	17 750 €
Extended Carbon Fibre package [S/ST]	17 900 €
Extended Carbon Fibre package [XC]	5 200 €
Carbon Fibre Roof Light Bar	4 600 €
Extended Navigation package	10 790 €
"Fusion" Camouflage Wrap	7 950 €
Enclosed toilet compartment	5 400 €
Air Conditioning in front lounge	6 200 €
Zero emission power bank*	12 500 €
Heater Webasto	4 130 €
Infortainment Media Wall	3 850 €
Folding aft deck seats**	2 850 €
Aft windlass	4 130 €
Roof rack	1 350 €
Side rails	1 480 €
Antifouling [standard on Black Ops]	2 050 €
Harbor cover Planofil [standard on Black Ops]	6 100 €

* Not available with BRABUS Aft Cabin

**Not available with BRABUS Aft Cabin and Multi Storage compartment

Prices may be changed without prior notice. Prices displayed are all VAT 0%



EXTENDED OPTIONAL EQUIPMENT

WETBAR PACKAGE

- Wet bar on aft deck
- Top loaded refrigerator w. 40l capacity
- Corian countertop in black
- Sink and faucet in stainless-steel w. lid on top of sink in black Corian
- Large fixed handrail in stainless steel / black leather
- Curved locker doors in double sided gelcoat finish w. slam latch locks
- 2 x deck lights at centre threshold
- 2 x ambient lights mounted under roof [ST/XC]

BRABUS AFT CABIN

- Spacious aft cabin accommodating additional two persons onboard
- Extensive use of exclusive BRABUS® "Fine Leather" and detailing
- Ambient led lighting package, incl. reading lights and floor lights
- Spring bed mattress in grey/black patterned Dinamica upholstery
- 2 x flush roof hatches w. integrated blackout and mosquito net
- BRABUS® leather carpet in black
- Illuminated BRABUS® door sill

MULTI STORAGE COMPARTMENT

- Large storage compartment on aft deck for storing of on-water gear
- Lockable large hatch in double sided gelcoat and gas strut supported
- Additional 2 x LED lights inside storage compartment
- Water resistant carpet in black
- Sun deck cushions in red w. BRABUS® Sport detailing
- Harbour cover in red

EXTENDED CARBON FIBRE PACKAGE

- BRABUS® Carbon Fibre Seat Panels on front row cabin seats [XC]
- BRABUS® Carbon Fibre Seat Panels on all cockpit & helm seats [S/ST]

EXTENDED NAVIGATION PACKAGE

- Extended Glass Bridge / InformationDisplay w. two additional 9" screens
- 5" Touch display in front cabin with digital switching
- BRABUS® Lock Box in front cabin PIN controlled from 5" Touch display
- Upgraded VHF unit, including AIS receiver [ST]
- WIFI On-Board connectivity, 3G/USB mobile router

CARBON FIBRE ROOF LIGHT BAR

- BRABUS® Carbon Fibre Light Bar with 2x1300 Lumen LED projector lights on top of the roof [ST/XC]

"FUSION" CAMOUFLAGE WRAP

- "Fusion" livery wrapping in grey and black accents w. BRABUS® and double® signatures

ENCLOSED TOILET COMPARTMENT

- Privacy toilet enclosure in front lounge
- Separation walls, lockable door and threshold in frosted black finish
- Toilet bowl moved to SB side, mounted in transverse direction
- Corian top and sink in black in toilet compartment w. small storage compartment
- Stainless steel faucet in toilet compartment
(deletion of mirrored wall panel & cabinet w. sink and faucet on port side)

ZERO EMISSION POWER BANK

- Silent ION power pack 5120Wh
- Generator replacement and no need for additional thru-hull connections
- 230 50Hz – 120V 60Hz versions available
- Recharge via shore power or outboard alternator
- 3 x 100Ah Lithium Ion batteries
- Inverter Sine Wave 12V DC – 3000W
- Battery charger 12V 40A
- Battery monitoring display
- Remote controlled ON/OFF main switch
(note, adds total weight of 90 kg, not available w. BRABUS Aft Cabin option)

HEATER WEBASTO

- Heater Webasto Air Top Evo55, 5.0kW, diesel
- Separate 20l diesel tank w. filler cap in port side aft deck fender box

AIR CONDITIONING FOR FRONT LOUNGE

- Webasto BlueCool S8 series airconditioning unit for front lounge
- Cooling capacity 8000BTU / 2.3 kW installed in cabinet

INFORTAINMENT MEDIA WALL

- Media wall in BRABUS® "Fine Leather"
- 42" 4K UHD flat screen television and AppleTV connectivity



REDEFINING LUXURY DAY BOATING

BRABUS Marine; the cutting-edge alliance forged between Axopar Boats, the world's most talked about day-boat/sports-weekender range, and BRABUS, one of the world's leading high-performance supercar producers.

Where Scandinavian design meets German engineering, BRABUS Marine is devoted to building and developing ultra-exclusive, supremely exciting boats; the result of two companies united in the extreme.

brabusmarine.com